

MONTHLY MEMBERSHIP PROGRESS REPORT

District 11 E2

Results as of: 5/31/2020

GMT:

LOCATION MICHIGAN

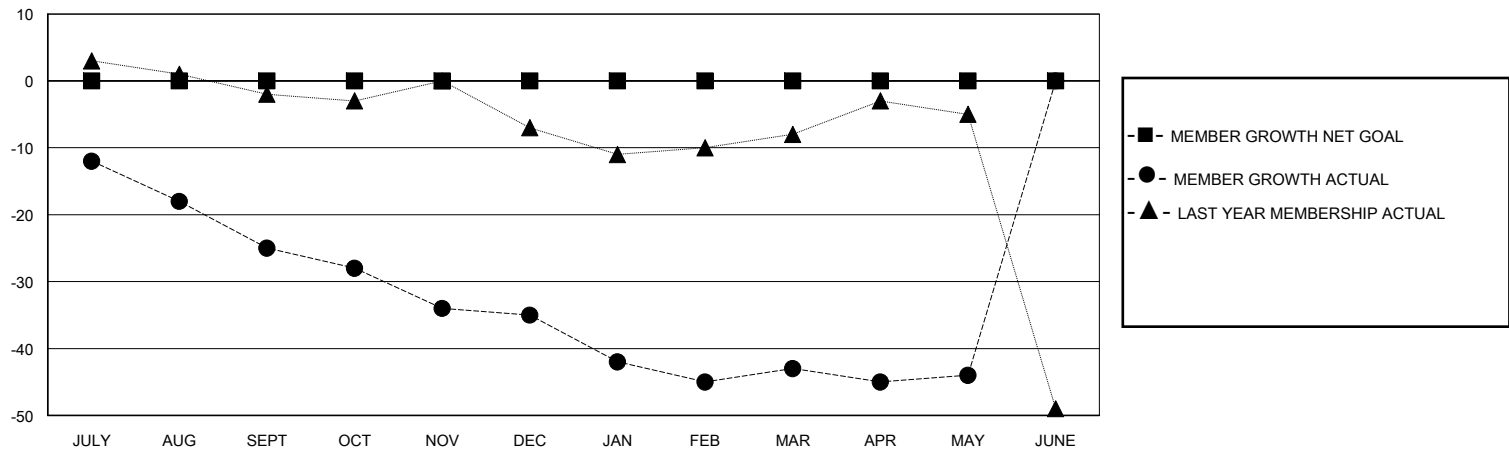
GMT CA

Clubs				Members			
RESULTS FOR 2019-2020				RESULTS FOR 2019-2020			
QUARTER	NEW CLUB GOAL	NEW CLUBS	DROPPED CLUBS	QUARTER	MEMBER GROWTH NET GOAL	MEMBER GROWTH ACTUAL	DROPPED MEMBERS ACTUAL (including transfers)
JULY/AUG/SEPT	0	0	2	JULY/AUG/SEPT	0	6	29
OCT/NOV/DEC	0	0	0	OCT/NOV/DEC	0	10	18
JAN/FEB/MAR	0	0	0	JAN/FEB/MAR	0	10	18
APR/MAY/JUNE	0	0	0	APR/MAY/JUNE	0	9	10

GOALS AND ACTUAL NEW CLUBS CUMULATIVE



GOALS AND ACTUAL MEMBERS CUMULATIVE



DROPPED CLUBS: 2	12 CLUBS OF 32 ADDED 1 OR MORE NEW MEMBERS	GENDER DISTRIBUTION MALE 561 (71.65%) FEMALE 222 (28.35%)
DROPPED MEMBERS DECEASED 21 CLUB CANCELLED 0 OTHER 54 <hr/> TOTAL 75	CLICK HERE FOR CUMULATIVE MEMBERSHIP DATA	TOTAL FAMILY UNIT MEMBERS 103 FAMILY MEMBERS PAYING HALF DUES 52